

CAN I STUDY FOR THE TEST?

Prepare for the Placement Test

Sample items that illustrate the types of questions you will on the Accuplacer placement test can be found at these **free** websites:

1. <http://www.collegeboard.com/student/testing/a/ccuplacer/index.html>
2. www.testprepreview.com (Click on Accuplacer Practice)

For additional practice sites visit:
<http://msjc.edu/assessment>

Mt. San Jacinto College does not endorse or require you to purchase any of the sponsor's products.

Things to Remember?

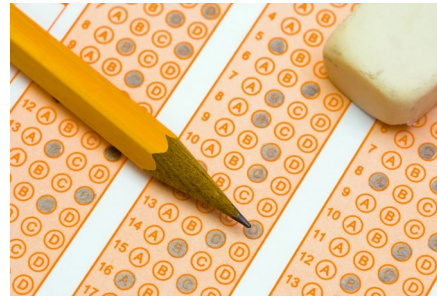
- **Remember to bring a picture ID** (Driver's license, school ID, etc.). Note: You will not be admitted without a photo ID. Dictionaries, textbooks, notes and other such study aids are not permitted.
- **Take this test very seriously!**
Take your time and do your best work! Testing is untimed. The results of this test will determine whether you will first be required to begin with developmental courses prior to enrolling in college level courses. It is very important to know that developmental courses do not carry graduation credits.
- **Average test time** takes about 1.5 hours but could take up to 3 hours
- **Relax! Do not worry if you are not familiar with computers.** You do not need to know anything about computers to take the ACCUPLACER test.
- You are not allowed to use dictionaries, calculators, notebooks, or textbooks of any kind. You will be provided with scratch paper and a pencil.

San Jacinto Campus, Building 1200, Room 1210
1499 N. State St.
San Jacinto, CA 92583
(951) 487-3310

Menifee Valley Campus, Room 1014
28237 La Piedra Rd.
Menifee, CA 92584
(951) 639-5310

Temecula Education Complex
27447 and 27463
Enterprise Circle West
Temecula, CA 92590
(951) 308-1059

San Geronio Pass Campus
3144 W. Westward Ave.
Banning, CA 92220
(951) 922-1327



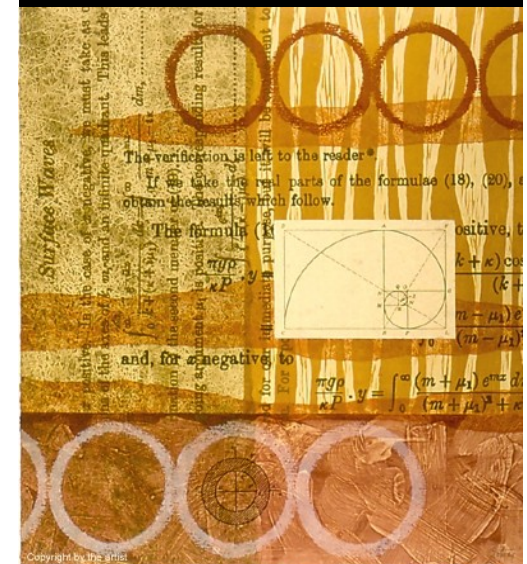
For the most current assessment dates and hours visit www.msjc.edu (click on Assessment link).



Assessment



Center



College Placement Test

The placement test evaluates a student's academic skills in Reading, English, and Math. It is designed to determine whether prospective students are ready to immediately enter college level classes or whether they need some additional preparation.

Mt. San Jacinto College uses a computer-based placement test known as ACCUPLACER.

Accuplacer Reading Test

There are 20 multiple choice questions on this test. You will read passages and answer questions relating to what you have read.

Accuplacer Sentence Skills Test

There are 20 Sentence Skills questions of 2 types. The first is sentence correction. These questions ask to choose the most appropriate word or phrase to substitute for the underlined portion of the sentence.

The second is construction shift. These ask that a sentence be rewritten while maintaining essentially the same meaning as the original sentence.

Accuplacer Math Test

There are **three** levels of math testing. You will take the levels of math based on your degree program and math background. Some students will take 1 level while others may take 2 or 3.

The three levels of math testing are:

1. Arithmetic
2. Elementary Algebra
3. College Level Mathematics

Special Needs

The Assessment Centers on the Meniffee Valley and San Jacinto Campuses will provide appropriate assistance to students with special needs (e.g. hearing impaired may require interpreters or visually impaired may need print enlargement). Please contact the Assessment Center nearest you.



Assessment is required for students who meet one or more of the following criteria:

- Students enrolling in a degree or certificate program (matriculated students).
- Non-matriculated students will be allowed to register for up to six credits, prior to assessment (with the exception of those courses listed above).

Students are strongly advised to enroll in assessed Math and English requirements during the first year.

Frequently Asked Questions

Is an appointment necessary?

No. All assessments are done on a walk-in, first-come, first-served basis during regular office hours. The Assessment Center provides this convenient system to meet the needs of our students' busy schedules.

How quickly will I receive my assessment test scores?

Results will be available within a few minutes of completing the assessment. After the assessment test, you will receive a printout of your score report. Meet with a counselor for more information about how your placements fit into your academic, program and career goals.

How often can I take the placement test?

Once; however recent high school graduates or students with placement tests three years or older; **who have not completed college coursework** in mathematics, English or reading may retake the placement test prior to course registration.

What if I've taken a placement test at another community college?

Students that have taken placement tests approved by the **California Community Colleges System Office*** at another college may bring documentation to the Counseling Department for placement into MSJC courses. The documentation must identify the college, placement test, courses (for example, English 200) where you were placed and your placement scores. *except locally managed tests

What if English is not my first language?

MSJC offers English as a Second Language (ESL) courses. To determine your placement for ESL courses, MSJC offers a Combined English Language Skills Assessment (CELSA) for placing non-native English speakers into English and Reading courses.